

TAKE OFF



Construction works on Brisbane's new runway.

Welcome to the first edition of *Take Off*, a newsletter that will keep you updated on the construction of the new runway at Brisbane Airport. *Take Off* will cover all the major milestones as we head towards the opening in 2020.

Julianne Alroe

CEO and Managing Director
Brisbane Airport Corporation

Brisbane's new runway enters final construction phase

Brisbane Airport's new runway is on track to open in 2020 with the awarding of the Airfield Works contract to Skyway, a joint venture (JV) between BMD Construction Pty Ltd and CPB Contractors Pty Limited, a member of the CIMIC Group.

Both companies have a strong connection to Queensland and to Brisbane Airport.

Julianne Alroe, Brisbane Airport Corporation (BAC) CEO and Managing Director, said, "Given the long history of this project which had its earliest planning stages in the 1970s, it is a significant milestone to announce the successful contractor for the largest, final and most expensive package of works to bring Brisbane's new runway to life.

"That Skyway joint venture partners both have a long and storied history with Brisbane Airport, and such strong local pedigree, is particularly pleasing."

"The new runway is the most important piece of aviation infrastructure being built in Queensland and the biggest undertaken by BAC since the airport was privatised in 1997.

"It is a \$1.2 to \$1.3 billion privately funded investment that, when operational in 2020, will provide unlimited opportunities for the growth of our city, state and, ultimately, our nation," Ms Alroe said.

Adolfo Valderas, CIMIC Group Chief Executive Officer, said, "BMD Constructions and CPB Contractors, as the Skyway JV, have brought together a team of expertise and agility to ensure an efficient and cost-effective works program.

"We are committed to ensuring that the project's planned operational, social and economic benefits are achieved through innovative and sustainable solutions – and that we deliver a quality asset of long-term value for Brisbane Airport and the people of Queensland," Mr Valderas said.

BAC's investment in this final stage of works, including the Airfield Works contract, is worth more than \$500 million and will take close to three years to complete. It is an enormous undertaking with the vast majority of large value components being locally sourced.

Turn to the back page for all the statistics on the new runway.

BNE and the community

**Have a question about the new runway?
Want to know more about Brisbane Airport?**

Brisbane Airport runs free community bus tours. For more information and to book visit bne.com.au/tours or

Come and visit the Brisbane Airport team at the Nundah Village Street Festival on Sunday 10 September 2017.



BNE team at the Tenerife Festival

About the builders

About BMD: BMD has grown from a small Queensland family business to become one of Australia's largest privately-owned construction, consulting and urban development organisations.

About CPB Contractors: CPB is a wholly owned subsidiary of the CIMIC group (formerly Leighton Holdings). The CIMIC Group Limited (ASX: CIM) is one of the world's leading international contractors and the world's largest contract miner. It operates in more than 20 countries throughout the Asia Pacific, the Middle East, North and South America and Sub-Saharan Africa and, as at 31 March 2017, employed approximately 51,300 people directly and through its investments.

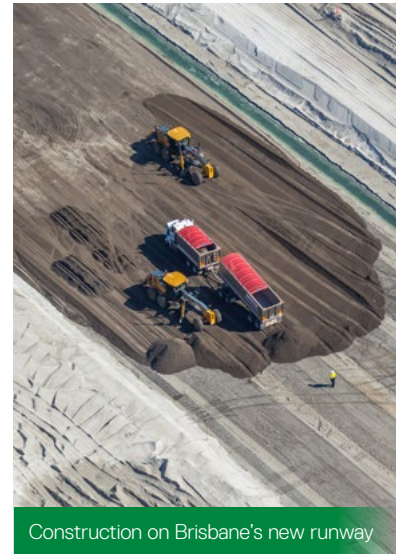


L-R: Trevor Evans MP, The Hon Darren Chester MP, Julianne Alroe, CEO and MD, BAC, Mick Power, Chairman, BMD Group, Adolfo Valderas, CEO, CIMIC

How Brisbane's new runway will be built



Sand settling on Brisbane's new runway



Construction on Brisbane's new runway

Preparation

(approx. 20 months to complete)*

- » Set up compounds for peak crew of 400 workers (water, toilet facilities, offices and crib huts)
- » Excavate and remove sand (5M cubic metres)
- » Proof roll sand by flooding the sand (with water pumped from Kedron Brook Floodway) and rolling with special compaction machines to consolidate the sand for uniform base material.

Pavement Production

(approx. 21 months to complete)*

- » Establish batch plants for concrete, crushed rock and asphalt to form a production line of pavement materials
- » Haul materials from quarries (approx 1.25 million tonnes) to stockpile on site and feed the production line to make the different pavement layers and the concrete mixtures (different recipes of rock and additive ingredients for each component)
- » Pavement material then placed on 3.3km runway (mostly asphalt) and around 12km of taxiways (all concrete).

Why does it take eight years?

The ground conditions at Brisbane Airport are likened to swamp land and it takes time to build a reliable base on this land.

2012

Access roads and site compounds constructed.
Runway site cleared of vegetation

2014/
2017

11 million cubic metres of sand dredged from an approved site in Moreton Bay. Placed on the runway site at varying heights depending on the softness of the underlying soils. Sand left to settle and compact for three years





Airside operations at Brisbane Airport

Airport Lighting

(approx. 24 months to complete*)

- » Install all airport lighting:
 - a. Drill holes (over 2000) in pavement every 30m on either side and down the centre of each taxiway and every 15m down the centre of the runway
 - b. Place light cans in hole and connect each to their own power source to the side of the runway (part of the 40km of electrical wiring)
 - c. Build Airport Lighting Electrical Rooms and connect to control systems in the tower
 - d. Construct High Intensity Approach Lighting structures into Moreton Bay and at the southern end of the runway.

Airfield

(approx. 26 months to complete*)

- » Install drainage (open and in-ground)
- » landscaping (including recycled water, onsite topsoil production and turf establishment)
- » Install all Movement Area Guidance Signs (runway system street names)
- » Line marking including runway ends 'piano keys', edge lines and hold points.

Services and Systems

(approx. 12 months to complete*)

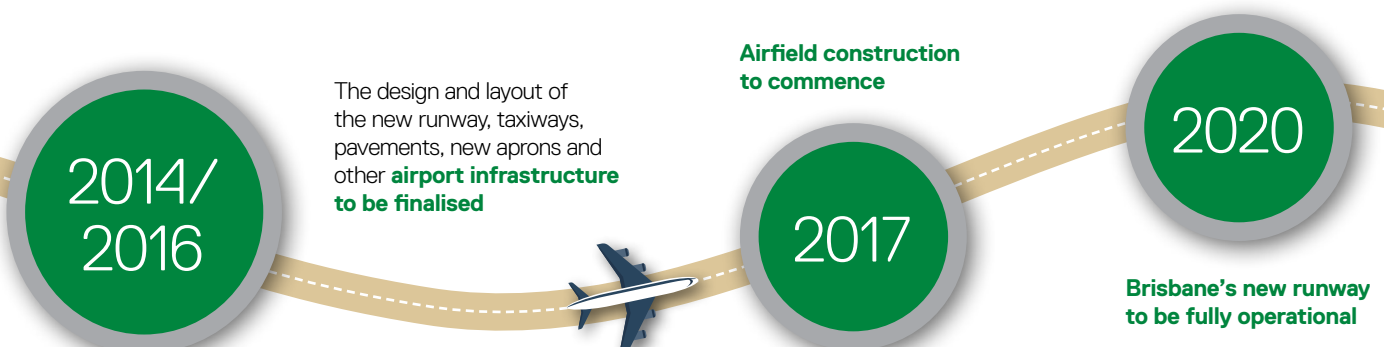
- » Install all other electrical wiring e.g. to all navigation aids, weather instruments etc.
- » Communications fibre ring around the whole airfield; and
- » Control system installation testing and commissioning.

Navigation Aids

(approx. 12 months to complete*)

- » Additional clearing and replanting
- » Prepare sites (electrical, water and parking for Airservices to install equipment including:
 - a. Instrument Landing System = Localiser (horizontal) and Glide Slope (vertical)
 - b. Surface Movement Guidance System, SMR Tower and relay units.

* Some of these stages run concurrently



By the numbers

Total cost of project up to
\$1.3
billion

Over
400
people

working directly on the project site during the peak period



89%

of project employees live in Brisbane

90% of project materials will come from SEQ (excavators, compactors and trucks)

Approximately

16km

of drainage pipes (likely to be local)

11
million
cubic metres of dredge sand

Approximately

750,000t

of quarry products (sourced and transported locally)

Approximately

260,000m³

of topsoil to be generated from on site, supplemented with approximately 15,000m³ imported from local sources

360
hectare
Site

Approximately

380,000t

of aircraft grade concrete (prepared on site from local products)

Overall thickness of runway

3.2m deep



125mm asphalt layer placed on top

600mm fine crushed rock

2475mm of compacted sand

Approximately

5,000,000m³

of earthworks to be undertaken



Approximately

100,000t

of aircraft grade asphalt (prepared on site from local products)



Up to
1,250
million
litres of recycled water



Up to
300ha
of landscaping, turf and seeds to be sourced locally



BRISBANE'S NEW
RUNWAY

Project contact details

Freecall: 1800 737 075 (Mon-Sat 6am-6pm)

Website: www.bne.com.au/newrunway

Brisbane Airport Corporation
11 The Circuit Brisbane Airport, QLD, 4008



@brisbaneairport